

EFA

EDUCATION FOR ALL

EFA SHAPES THE FUTURE AND THE PRESENT

Projects for people in need





Dirk Fissmer, founder, EFA Chairman, and Christian Zurbrüggen, main sponsor, mentor, friend

EDUCATION IS **THE WAY** TO A BETTER LIFE

DIRK FISSMER FOUNDER, EFA CHAIRMAN

I was able to travel to a country that is not only far away, but is also completely different from what we Europeans imagine it to be. But I didn't want to do this from the comfort of my sofa; I wanted to experience life in Pakistan for myself. The time had finally come for me to visit the school, which was only a few meters away from the house I was living in. I think only the children were more excited than me. I didn't miss the opportunity to greet every single child. I kept looking into their beautiful eyes. I fell in love with every single child. Of course, I noticed the shortcomings in the school and the village.

For just \$75, I was able to make life easier for a few hundred children by installing a water pump in the schoolyard. By now I had realized that I could make a big difference with very few resources. Since then, I have brought relief supplies to several countries around the world in the hope that those children will later prefer to hold a book rather than a weapon in their hands. My helpers have expanded the range to include wheelchairs, hearing aids, medical equipment, and much more. When I met my wife

Nigora in 2010, we were sure that we wanted to do social work and spend our lives together. At first, we limited ourselves to getting relief supplies to emerging countries. However, when my wife inherited a large plot of land with a house, we immediately realized that we didn't need it for ourselves, but would give it up for our dream. We decided to build an education center in Tajikistan for people with disabilities, an integrated women's shelter, and a children's home.

Because we obviously could not do this alone, we looked for partners and supporters who will also have their say here. The construction costs for the education center have been secured. The premises for the women's refuge and the children's home were completed by 2024. The Participation through Sport project is explained in detail on page 12 of this brochure.

Take the time to find out more about our projects. We want to make a difference together, but we also have to make a difference ourselves. We have also addressed the issue of refugees. In order to reduce the flow of refugees, more preventative help must be provided in the refugees' home countries.

PATRONS & **SUPPORTERS**



Mario Löhr, District Administrator of the district of Unna:



Oliver Kasmarek, Member of the Bundestag:



Berndt Schäfer, Mayor of Bergkamen:

EDUCATION FOR ALL

„That is the demand of Education For All (EFA), which Dirk Fissmer is pursuing with commitment and relentlessness. Many important campaigns, initiatives, and projects have already been implemented and others are in progress or being planned. They help to overcome poverty and break through gender injustice. This deserves recognition and gratitude, respect and appreciation.“

„Standing up for other people—that is the task to which Dirk Fissmer and Education for All have dedicated themselves in a voluntary capacity. The project in Tajikistan will primarily help people who need special protection there and who can get a better start through education. I am therefore pleased and proud to be able to personally support these activities as a patron of EFA.“

„Education is the key to many things. Whether personal life and career goals are fulfilled, one's own family is materially secure, and a solid pension is possible is often directly linked to educational qualifications. Nowadays more than ever. And especially in countries where access to education is not a matter of course. Because education is close to my heart—especially for disadvantaged people—I am very happy to support the **Education For All** initiative as its patron.“

PROJECTS: PAKISTAN, TAJIKISTAN, AFGHANISTAN, AND MANY MORE

I would like to tell you about my projects in Pakistan, Tajikistan, Afghanistan, and several countries in Africa. I visited Asia for the first time in 2008, and this trip subsequently changed me. When I met the principal of a school in Pakistan through church work, I had no idea what a unique opportunity I was being offered.

EFA

EDUCATION FOR ALL



Dirk Fißmer, Chairman of the Board

The Förderverein Bildung und Entwicklung und medizinische Versorgung in Schwellenländern e. V. (Association for the Promotion of Education and Development and Medical Care in Emerging Countries) has been operational since 2007 in countries including Germany, Pakistan, Tajikistan, Afghanistan, Vietnam, and Armenia, as well as African countries. The association has been registered and tax-privileged since 2013. The association is non-political, non-religious and works exclusively for humanistic purposes.

WHAT IS EFA?

Our Education for All (EFA) program is especially designed to empower women and children and people with disabilities. Education is a strong foundation for development. Without education there is no development. Education is the foundation for combating lack of opportunities, poverty, and violence. We are currently actively operating in Tajikistan because Tajikistan is my wife's home country and we therefore have better access to the population. „THAT MAKES OUR WORK MORE EFFECTIVE,“ says Dirk Fißmer, RCE Partners

Director.

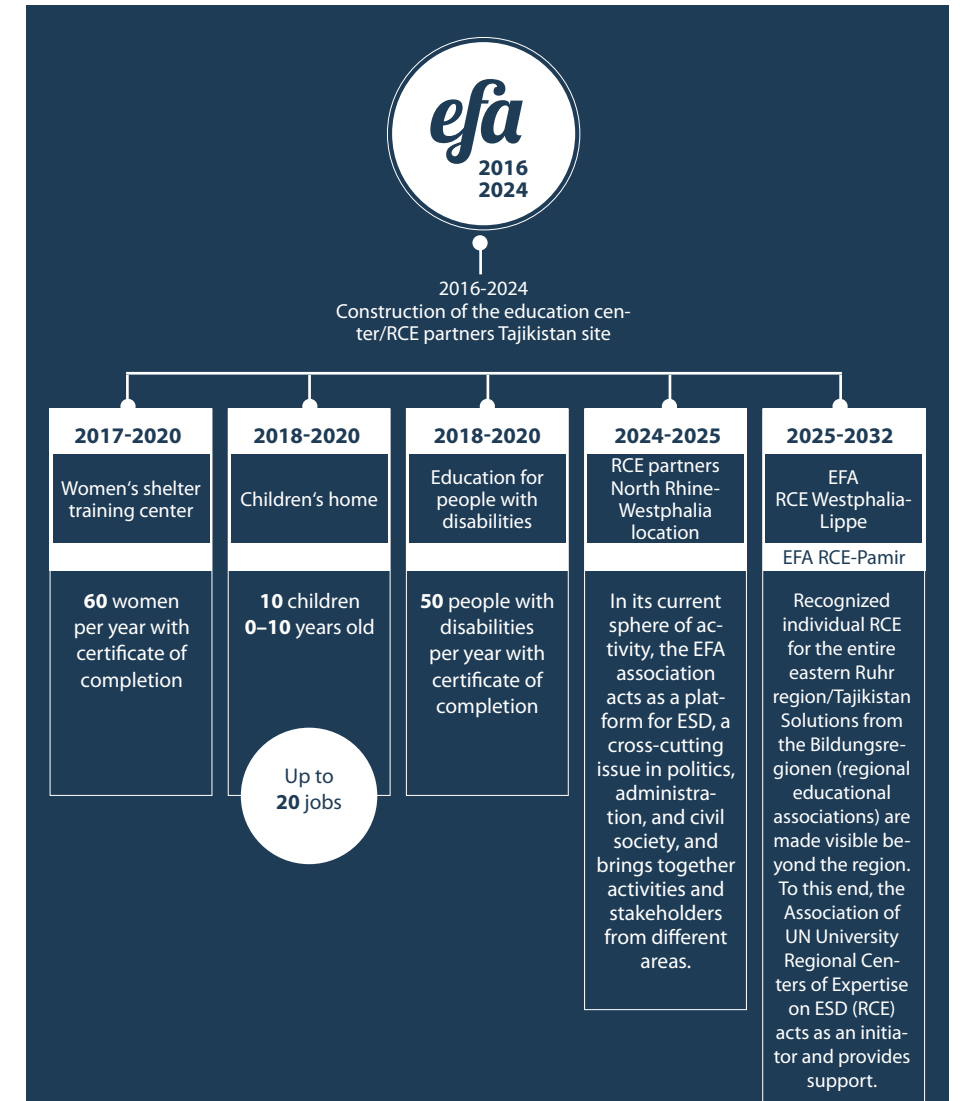
BACKGROUND

Being born as a child in a developing country means a lifetime of poverty and lack of opportunities. It is even more difficult for a girl or a woman to live in a village. „When my siblings and I went to school in the 90s there were very few girls in the classrooms. I was one of three girls in the class. After the other two girls were no longer allowed to attend school, I had to change schools. I then went to a Russian school and finished school along with seven classmates. There were three girls and four boys in the class. At that time, educated girls were called whores and regarded as badly brought up women,“ says Nigora Fißmer, Deputy Chairwoman of the association. Without education, life is a dead end. Poor education leads to a lack of opportunities and poverty. In the long term, a lack of opportunities leads to a lack of peace and violence.

WHAT WE DO

Dirk Fißmer, Chairman of the Board:

„Based on these experiences, we decided to build an education center where victims of sexual and domestic violence can take refuge and protect themselves. During their stay at the education center, women and girls can learn professions according to their abilities and take language and computer lessons in order to create their own paths into the future.“



ZURBRÜGGEN & EFA



Dirk Fißmer, founder, EFA Chairman and Christian Zurbrüggen, main sponsor, mentor, friend

For more than a decade, Christian Zurbrüggen has not only been a mentor and EFA's principal sponsor, but has also been actively involved in promoting the United Nations' development goals.

The economy, culture, education, and business approach is pursued sustainably by EFA and Christian Zurbrüggen.

The Zurbrüggen company bears almost all of the construction costs for the education center, the building site, the women's refuge, the childcare center, and furniture, as well as the construction costs for a large swimming pool.

The costs for the brochure you are currently reading were also borne entirely by Christian Zurbrüggen. Christian Zurbrüggen is a good example of how you can help as an individual or as a company. A sales campaign, a company run, but also a long-term partnership with EFA are possible. Are you familiar with cause-related marketing campaigns?

A well-known example of this is that „X amount“ is donated to a social project for every item sold. This marketing tool helps you to sell your product and can be perfectly combined with your social commitment. Of course, EFA will take care of communication and provide you with photos and film evidence for your donation. A donation receipt is obligatory. Our partners also bear our logos. Happy events such as birthdays and weddings but also sad occasions such as the loss of a loved one make us think of people in need. Christian Zurbrüggen has chosen a happy personal occasion to think of people in need. The procedure is relatively simple and makes it possible to donate instead of giving gifts: your guests can transfer the money directly to the donation account or you can collect the money and transfer the total amount. If you too don't really want for anything and would rather do without personal gifts, we would be happy to advise you.

zurbrüggen
www.zurbrueggen.de

PROJECTS AT HOME AND ABROAD

Projects that EFA has already implemented at home and abroad are to be communicated to students, the educational landscape, and fellow citizens.

1. SAVING WATER AS A RESOURCE BY PASSING ON RELIEF SUPPLIES
2. PASSING ON USED STAINLESS STEEL SURGICAL TOOLS TO EMERGING COUNTRIES
3. PARTICIPATION THROUGH SPORT
4. PASSING ON RELIEF SUPPLIES TO THOSE IN NEED
5. PASSING ON FURNITURE TO PEOPLE SEEKING PROTECTION AND PEOPLE IN NEED
6. CONSTRUCTION OF WATER TANKS
7. COLLECTING AND ACCUMULATING RAINWATER USING RAIN GUTTERS
8. TRAINING AS A SEAMSTRESS
9. THE WOMEN'S REFUGE
10. COMPUTER TRAINING
11. SUPPORT FOR IMPOVERISHED STUDENTS
12. PLAYFUL, SUBLIMINAL LEARNING OF FOREIGN LANGUAGES THROUGH PARTICIPATION PROJECTS



IN PROGRESS:

Participation through art, verse, and poetry

PROJECT: THIRSTY CLOTHING

THE ECOLOGICAL FOOTPRINT

EFA has implemented a number of projects to date. On the following pages, you will find two representative projects.

EFA collects overproduced and returned everyday items that would otherwise often be destroyed and donates them to organizations and people in need worldwide. This conserves valuable resources and gives *things* a second life. A great social and ecological benefit.

We can explain this using the production of T-shirts as an example.

*Various sources of virtual water are involved in the production of a cotton T-shirt. All the water that is actually used in the production of a T-shirt is included in this calculation. In the case of cotton production, this includes irrigation of the fields, cleaning of the cotton, and subsequent processing of the fabrics. In this way, an average of 2,495 liters of water are used to produce a 250 gram cotton T-shirt. To put this into perspective: a bathtub can hold 150 to 180 liters of water. The figure for a pair of jeans weighing 800 grams is many times higher at 8,000 liters of water. When looking at these figures, however, it must be emphasized that these are global averages and that they can vary massively depending on the region. For example, only 6,000 liters of water are used per kilogram of cotton in China, whereas in Uzbekistan 9,200 liters are used per kilogram, and in India 22,500 liters. These regional differences can have devastating consequences. For example, in Central Asia, where the excessive extraction of water from the Aral Sea almost caused it to dry up.

Of course, water consumption in the production of other goods is much higher.

EFA has a warehouse with relief supplies in the district of Unna from which it donates up to 30 tons of relief supplies per year. Two to three tons of fresh relief supplies are added every quarter. In the last quarter of 2021, EFA distributed over 21 tons of relief supplies to organizations and people in need worldwide. All of the goods are new, including baby, children's, women's and men's clothing, shoes, and non-food items. Since March 2023, high-quality furniture has also been added to the list.

MAIN OBJECTIVES

EFA wants to save water itself and show other people how this is possible. To save resources and give a second life to products that would otherwise be destroyed.

To distribute donated goods to people in need free of charge. EFA also donates relief supplies to animal shelters.

- Saving energy by conserving water
- Reducing the burden on the environment by reducing wastewater pollution
- Taking less water away from plants because this damages the soil
- Drawing attention to the fact that products use much more water than we think
- Saving water means saving money

THE BENEFICIARIES

Direct beneficiaries

People and animals that receive aid from EFA. Water plays a central role in the development of life on earth. Without water, no life would have developed on our planet.

Indirect beneficiaries

With better regulation, everyone on the planet benefits, including our immediate environment.



DRINKING WATER IS A SCARCE RESOURCE ON OUR PLANET

WHAT IS RCE



Due to its willingness to implement the United Nations' development goals, EFA was recommended by the RCE Ruhr committee (University) to become the eighth RCE* of the United Nations, responsible for the entire eastern Ruhr region.

THE EFA IS A PARTNER OF THE UNIVERSITY.

The compass for all EFA projects is the 2030 Agenda or the Sustainable Development Goals (SDGs).

WHAT DOES AN RCE DO? WHAT WILL EFA DO AS RCE WESTFALEN LIPPE?

The main task is to link groups, institutions, and people who are working on a specific topic in a network. At the same time, projects will be carried out to implement ideas for solutions.

Each individual Regional Center of Expertise on ESD (RCE) is involved at the intersection of sustainable development, education, and regional development. By pooling the expertise available in the region, it supports the development of sustainable regional educational associations. Each RCE is accredited by the United Nations University (UNU).

The RCE Westphalia Lippe is intended to become a place where sustainability is tangible and where the economy, culture, and education in particular are addressed. Educational institutions are invited to provide educational programs under the umbrella of the United Nations.

Dialogue experts and cultural agents are trained who can then convey and present the knowledge they have acquired in creative skills. All active participants see themselves as disseminators, incorporating related subject areas and corresponding active projects from politics, education, and global learning such as:

Fair Trade, eco-social procurement and responsible consumption, ESD content, topics presented by RCE partners:

Cities and municipalities, schools, politics, energy providers, retail partners, fellow citizens.

Through partnerships in the educational landscape, many further contacts from the education sector can be addressed.

As RCE UNNA dialogue experts, we spread the optimism that together we can shape our future sustainably and peacefully if only we are prepared to act.

Dialogue experts thus bring relevant topics to the center of public attention.



RCE-Ruhr · c/o atavus e.V. · Eschenstraße 14 · D-45134 Essen

Dirk Fißmer
EFA
Unna

Ihr Ansprechpartner
Peter Reichenbach
Telefon-Durchwahl
+49201777218
E-Mail
atavus@live.de
Datum
26.02.2022

Mentorship for the application as RCE Westphalia Lippe

Dear Mr. Fißmer,

After thorough consideration, we, the committee of the RCE Ruhr UNU, would like to support you with your network in applying to the UNU as RCE Westphalia Lippe.

Based on your work and your willingness to support the development goals of the United Nations, we are happy to be the mentor for your official application. The application itself is made via the UNU office in Tokyo.

Through your sustainable support, ideas, and commitment within your network, those affected are given an opportunity to shape their future and put visions of sustainability into practice.

We also commend your approach of bringing sustainable development goals to the general public and reaching people who are often excluded from sustainable programs.

By 2030, RCE Europe will develop measures for which we would like to be able to count on your expertise. The approach of economy, culture, education, and business will be pursued sustainably by you and your team. We therefore look forward to a diverse, forward-looking collaboration in your region.

Kind regards
RCE Ruhr Chairman
Peter Reichenbach

1 / 1

RCE-Ruhr
c/o atavus e.V.
Eschenstraße 14
45134 Essen · Germany

Vorsitzende atavus e.V.:
Tibor Schäfer/Sabine Howaldt
Steuer-Nr.:112/5753/0747VST
Verinsregister VR 4811

Telefon: +49 201 777 218
E-Mail: info@rce-ruhr.org
Internet:www.rce-ruhr.org
Facebook:RCE-Ruhr

Sparda-Bank West
Konto:2156339 BLZ:360 605 91
IBAN: DE73360605910002156339
BIC:GENODED1SPE

PARTICIPATION THROUGH SPORT



Children drown every year on their way to school or during leisure time. In addition, the leisure facilities are poor. EFA has placed a particular focus on children with disabilities and girls as they need special support. A sports program is hardly conceivable for these groups. Sport refers to all physical

activities that promote physical and mental well-being and social interaction.



Languages can also be learned subliminally as the children were able to converse very quickly in German, English, and, of course, Persian. At the first attempt, we received a good response from the mothers as the area where the pool is located is not visible. At the request of the women, EFA will expand the swimming lessons.

It is allowed if it is specifically for women only, if no sins occur, and if it is

not done among men in that the place is hidden and away from men. This applies to running, swimming, and all other sports. *

Source: *The ruling on women's sports - Islam Fatwa

PROJECT OBJECTIVES: OBJECTIVE 1

To reduce child drowning fatalities statistics. EFA wanted to at least give children the chance to save themselves.

OBJECTIVE 2

To offer children a range of sporting activities that they enjoy and that encourage girls and children with disabilities in particular. In a second step, women will also be able to take advantage of the offer.

OBJECTIVE 3

Implement the goals of the 2030 Agenda and the Sustainable Development Goals (SDGs). The following points are mentioned for the Sport for Participation project:



Which problems should the project explicitly not address? Where is a deliberate distinction made?

DELIMITATIONS:

As EFA, we do not pursue any political, religious, or ideological goals. EFA's guiding principle is the idea of tolerance: Only the personality of the individual, not their origin or ideology, is decisive for the network. EFA, rejects right-wing and left-wing extremist violence and all related ideas. We reject all forms of psychological and physical violence.

At EFA, no one is disadvantaged or restricted in their human rights because of their gender, skin color, religion, nationality, political conviction, property, or other differences.



PROJECT POOL

MORE ECOLOGICAL USE



Why do we bring used IT hardware to emerging countries? We give used IT equipment a second life. There are also ecological benefits because the extraction of natural resources and environmentally harmful greenhouse gases are reduced.

Another advantage is the reduction of electronic waste. For the same reason, we usually also try to bring disused aid supplies, such as spectacles, wheelchairs, etc., for the developing world, to emerging countries.

A used item is only used, not scrap, and makes life easier for people in need. The ecological rucksack carries its load. Whether jeans or notebook computer, energy production or driving a car: Raw materials that are not always visible in the end product are used for everything. However, the Wuppertal Institute has developed a way of finding out for every conceivable product whether it carries a heavy load from an ecological point of view.

The researchers have developed the illustrative „ecological rucksack“ measurement. It applies to all kinds of products and services. The scientists in Wuppertal are currently trying to strap an ecological rucksack onto the notebook computer.

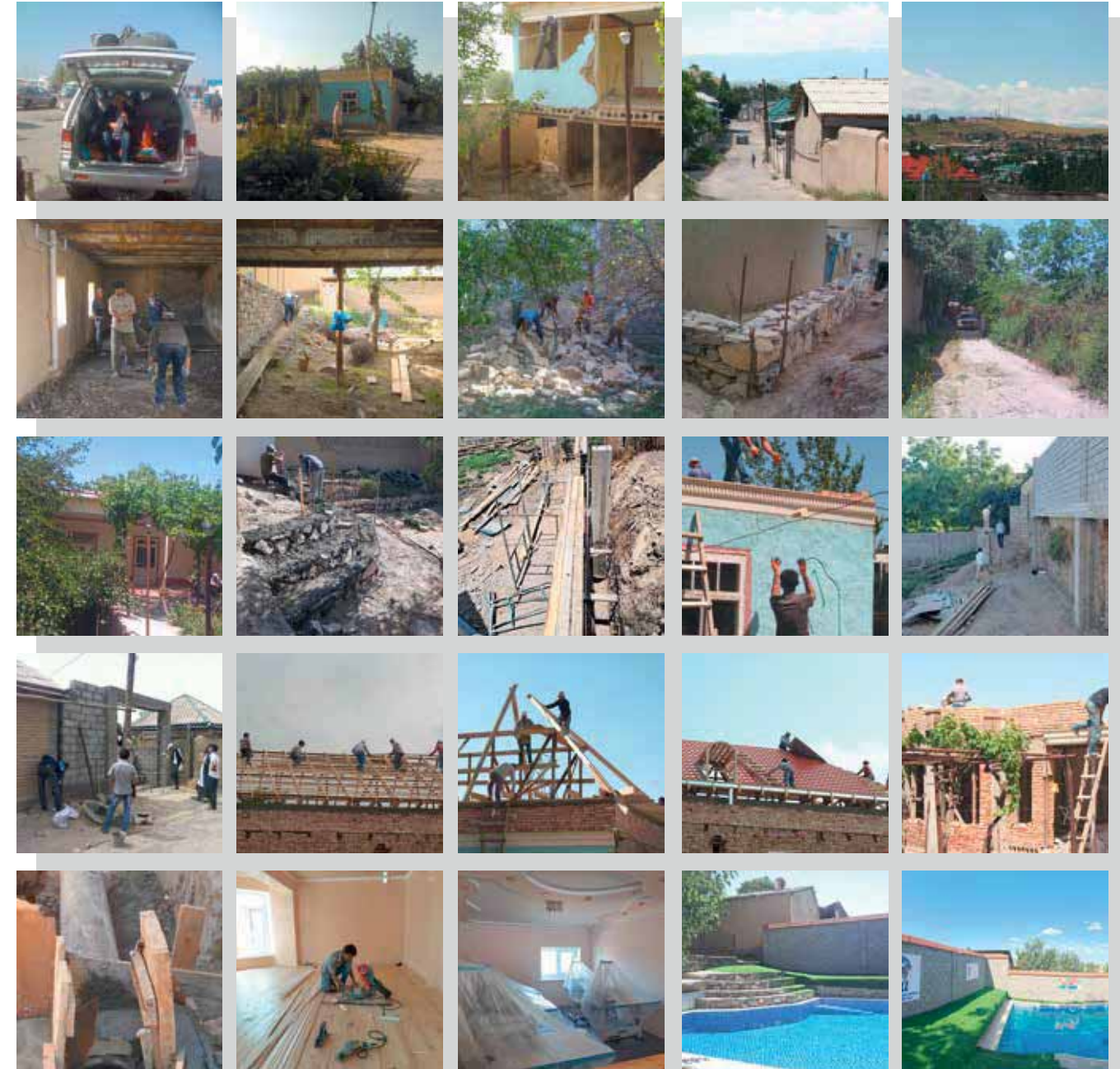


Three years ago, the rucksack for a normal PC weighed a total of 1.5 tons. It will be interesting to see what the result for the test notebook will be once the researchers have added up all the small backpacks that still need to be calculated for the device. Presumably, however, the end result of their calculations for the notebook will be similar to that for a normal PC.

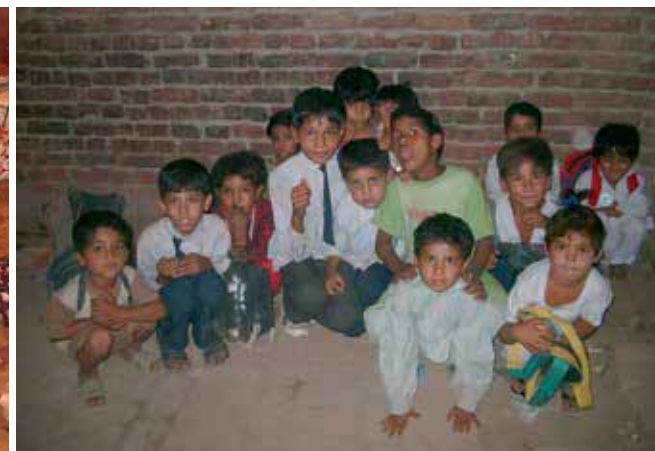
Source: WDR/Quarks & Co



PROJECT PHASE MILESTONES



SOCIAL BENEFIT WHY IS YOUR DONATION IMPORTANT?



YOUR DONATION

helped EFA to build an education center in one of the poorest countries in the world, which also serves as a women's refuge and training center. Girls who are exposed to domestic and sexual violence and lack protection can find refuge. In addition, people with and without disabilities are given access to education and participation through sport.

**GIVE CHILDREN IN
NEED A NEW HOME**

LOWA
simply more...



01 MEASURES IN FAVOR OF MEN

Due to its construction projects, EFA is one of the largest employers offering fair wages in the city.

- Distribution of relief supplies such as shoes, clothing, toys, IT, and medical supplies in hospitals.
- Digital participation.
- Subliminal language learning through participation in joint activities.
- Strengthening of personalities.
- Without the provision of sturdy shoes from Lowa, most of the workmen on our construction sites would work in open-toed shoes.
- EFA also sends Lowa shoes to war zones and crisis areas.

SOCIAL BENEFIT WHY IS YOUR

DONATION IMPORTANT?

02

PROJECT CONTEXT AND REQUIREMENTS

EFA compass and guide
The 2030 Agenda with its 17 Sustainable Development Goals (SDGs) is a global plan to promote sustainable peace and prosperity and to protect our planet.



03

PROJECT DETAILS: MEASURES FOR THE BENEFIT OF PEOPLE WITH DISABILITIES

Grouping according to: participation in language and computer classes, preparation for potentially vocational occupations to prepare the group for occupations that match their abilities.

- Strengthening of personalities.
- Participation through sport.
- Digital participation.
- Learning the profession of seamstress, educational measures with ESD content.
- Distribution of relief supplies, such as high-quality sewing machines, IT, clothing, and medical supplies to hospitals.



04

MEASURES IN FAVOR OF WOMEN/GIRLS

- Grouping according to: participation in language and computer classes, preparation for training center, assistance in finding a training center; vocational occupations are supplemented according to project funds.
- Shelter for women/girls who are exposed to violence, advice through legal assistance.
- Creating jobs for women in the training center or the education center's children's home.
- Support with potential self-employment.
- Educational measures with ESD content.
- Distribution of relief supplies, such as high-quality sewing machines, IT, clothing, and medical supplies to hospitals.



05

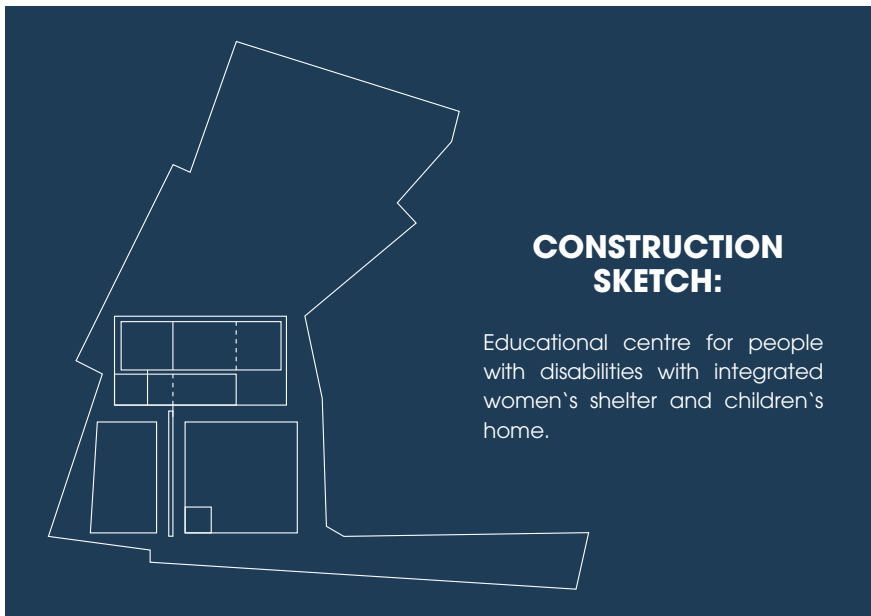
MEASURES FOR THE BENEFIT OF CHILDREN

- Care for the children of women attending classes.
- Participation through sport.
- Digital participation.
- Learning through play.
- Subliminal learning of languages through participation in joint activities.
- EFA literally takes children off the street and gives them beautiful memories.
- Strengthening of personalities.
- Distribution of relief supplies, such as shoes, clothing, toys, IT, and medical supplies to hospitals.



SITUATION IN TAJIKISTAN

Since the collapse of the Soviet Union in 1991, Tajikistan is one of the poorest countries in the world. Economic development is hampered by the fact that Tajikistan has no access to the sea and is therefore one of the landlocked developing countries.



CONSTRUCTION SKETCH:
Educational centre for people with disabilities with integrated women's shelter and children's home.



GEOGRAPHICAL LOCATION



WHY EFA

- Education is the foundation for combating lack of opportunity, poverty, and violence. We are currently actively operating in Tajikistan because EFA has a very good knowledge of the country. This means that EFA has better access to the population and knows their needs. This makes our work more effective.

- The deputy chairwoman worked in Tajikistan in an English aid organization with a focus on education and domestic and sexual violence against women and girls. She has also had further training as a social worker.

- The chairman was, among other things, head of public relations for people with disabilities at AfB (Working Group on Education) North Rhine-Westphalia and is familiar with the special needs of people with disabilities. Both chairpersons have studied German as a foreign and second language and therefore know how to apply methodology and didactics. It goes without saying that they are qualified trainers and coaches. The languages spoken in the country are spoken and written at first language level.



before



before



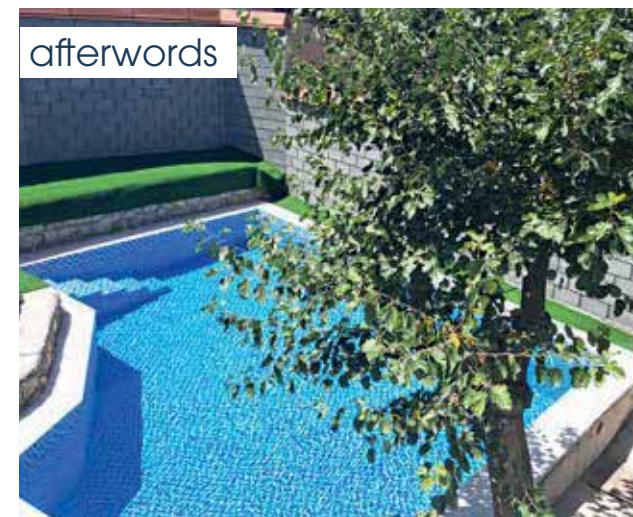
before



afterwords



afterwords



afterwords



SOCIAL BENEFIT

Through our projects, EFA manages to improve the development of the current generation and at the same time give future generations a choice in shaping their lives. The fact that we achieve this with the help of our partners, for example with used IT hardware and other second-hand relief supplies, is very fulfilling.

Our project aims to use newly acquired knowledge to develop open-mindedness, new perspectives, and integrated knowledge, and to channel the new use of approaches into different disciplines, leading to a different way of acting and thinking. Through our joint work with all those involved, conflicting goals can be taken into account when reflecting on new strategies for action. We have found that all those involved have been able to participate collectively in decision-making processes.

Another positive effect was that not only we but also many other people involved—pupils, teachers, authorities, donors of relief supplies, etc.—were encouraged to become active themselves. In the process, our mission statements and those of others were reflected upon and the idea of justice and injustice was integrated into our basis for action. Independent planning and action was of great importance for the success of our project. Recognizing and trying to understand the personality traits of other people helped us to implement our work.



EFA Education for all/Education center for Tajikistan with integrated women's shelter and children's home

Essen den 13.1.2015

Letter of Intent

Dear Mr. Fißmer,

We would like to welcome you as an official network partner and dialogue expert of sevengardens Tajikistan. We wish you every success with your education center in Tajikistan. As a representative of sevengardens, you are authorized to conduct training courses for dialogue experts and disseminators and to represent sevengardens as a Unesco project. We have named your education center as a representative for Tajikistan in the Unesco ESD World Action Program. We also fully support your planned establishment of an RCE Tajikistan within the framework of the UN University, and emphatically welcome it as a representative of the RCE Ruhr.

Yours sincerely
Peter Reichenbach

atavus e.V.
Eschenstraße 14
D-45134 Essen
Tel. +49.201.777218
info@sevengardens.eu
www.sevengardens.eu

chairman
Margret Reichenbach
Heike Kensity Rinas

project management sevengarden
Peter Reichenbach

St.-Nr. 112/5753/0747 VST
Vereinsregister VR 4811

in planning
EFA RCE PAMIR



Ausgezeichnet als offizielle Maßnahme der Weltdekade
Nationaler Aktionsplan

leben.natur.vielfalt

die UN-Dekade



RCE-Ruhr · c/o atavus e.V. · Eschenstraße 14 · D-45134 Essen

Zurbrüggen Wohn-Zentrum GmbH

Hans-Böckler-Straße 4

59423 Unna

Betr. Nominierung zum Kompetenzpartner des RCE- Ruhr

Dear Mr. Zurbrüggen,

We are pleased to inform you that Zurbrüggen Wohn-Zentrum GmbH has now been officially accredited as an expert partner of the RCE Ruhr/UN University. The reason for this is your willingness to support the development goals of the United Nations in your work. With sustainable ideas and commitment within your field of action, those affected are given the opportunity to shape the future and implement visions of sustainability in concrete terms. We also commend your approach of bringing the Sustainable Development Goals to civil society. Through your continuous support of EFA (Bildung und Entwicklung und medizinische Versorgung in Schwellenländer e. V./Association for Education and Development and Medical Care in Emerging Countries), you and your team have demonstrated far-reaching commitment both globally and regionally.

Within the framework of the sustainability goals, we can jointly develop measures for which we would like to be able to count on your expertise. You and your team will pursue economic, cultural, educational, and development goals in a sustainable manner.

We therefore look forward to a diverse, forward-looking collaboration in your region.

If you accept, you will receive an official award and recognition as well as the signatures for your communication.

Kind regards
RCE Ruhr Chairman
Peter Reichenbach

your contact person
Peter Reichenbach
telephone extension
+49201777218
E-Mail
info@rce-ruhr.org
date
30.04.2024

RCE-Ruhr
c/o atavus e.V.
Eschenstraße 14
45134 Essen · Germany

Vorsitzende atavus e.V.:
Tibor Schäfer, Sabine Howaldt
Steuer-Nr.: 112/5753/0747VST
Vereinsregister VR 4811

Telefon: +49 201 777 218
E-Mail: info@rce-ruhr.org
Internet: www.rce-ruhr.org
Facebook: RCE-Ruhr

Sparda-Bank West
Konto: 2156339 BLZ: 360 605 91
IBAN: DE73360605910002156339
BIC: GENODE33PSE

in planning
EFA RCE-WESTFALEN LIPPE

Unna, den 02.07.2024



The award ceremony took place at the Panorama Restaurant Wohn-Zentrum Zurbrüggen on Tuesday, July 02 2024 with many guests from politics and business, and a small circle of friends.

The call for sustainable partnerships was loud and clear at the World Summit on Sustainable Development in Johannesburg in 2002.

The 193 states of the United Nations came together. The call to action was answered by EFA and Christian Zurbrüggen, supporting the global call for active partnerships. At the same time, Dirk Fißmer became aware of Agenda 2030, informed Christian Zurbrüggen of it, and aligned his social work with the Agenda.

Through the effort to achieve as many of the 17 Goals as possible and to be able to help as many people as possible, EFA grew, as did Christian Zurbrüggen's support.

The compass guiding all EFA projects is the Agenda 2030 and the Sustainable Development Goals (SDGs).



SPECIAL AWARD



Dirk Fibmer (Founder), Dekan Peter Reichenbach, Christian Zurbrüggen (Main sponsor), Mario Löh (District Administrator of Unna).

AN IMPORTANT HONOR



Christian Zurbrüggen received a special award for his sustainable support, ideas and commitment to reshaping the future with EFA. Christian Zurbrüggen, together with EFA (Education for All), promotes the Sustainable Development Goals to the general public.

The committee of RCE-Ruhr UNU (UN University), represented by the Dean of the institution, Mr. Peter Reichenbach, officially recognized Christian Zurbrüggen as a partner of the RCE-Ruhr UNU.



DR. BERNDSEN GMBH, UNNA & **EFA**

**EFA IN THE PREMISES OF
FORSCHUNGS-INSTITUTS DR. BERNDSEN GMBH**



Dr. Klaus Berndsen explains to Dirk Fissmer his near-completion, government-funded neuroscientific and AI-driven research project aimed at training and refining complex neurophysiological gait movement patterns.



EFA is delighted to announce the collaboration with esteemed neuroscientists and rehabilitation specialists **Dr. Klaus-J. Berndsen, Sabine Berndsen**, and their team as valued partners for joint projects. **Dr. Klaus and Sabine Berndsen** are the CEOs and owners of facilities for individuals with disabilities as well as centers for medical technology research and development in the German town of Unna. They are authors of numerous scholarly articles and books, as well as holders of several patents. For many years, they have been involved in teaching at universities and continuing education institutes. Additionally, they regularly organize specialized training events on medical topics at their own training institute.

The work of **Dr. Klaus and Sabine Berndsen** focuses on the third goal of the United Nations Sustainable Development Goals (SDG): Good Health and Well-being. The Dr. Berndsen team has extensive experience in research, the development of medical technology innovations, customized software, and specialized AI. They have developed renowned medical treatment concepts and provide care at their rehabilitation institute for people with various disabilities. For the planned collaborative projects, they offer didactic concepts and practical aids aimed at promoting healthy lifestyles, precise diagnostics, and effective therapies designed for broad understanding. Additionally, medical devices and therapies are carefully selected and adapted to ensure accessibility and usability for people in need.



NEW **PARTNER**



An overarching goal is to leverage scientific expertise and long-term practical applications to enhance overall quality of life, promote health-conscious behaviors, and improve disease management, particularly for disadvantaged populations and individuals with disabilities.



Dr. Klaus Berndsen and Dirk Fissmer in the lab section for software and electronics development

WORLDWIDE PROMOTION

„HEALTH REQUIRES MIND“

The collective efforts of EFA and Dr. Berndsen GmbH are encapsulated under the established slogan „Health Requires Mind,“ which Dr. Klaus and Sabine Berndsen have been promoting through social media for several years. This phrase highlights the notion that health and appropriate disease management require both physical care and intellectual education.



Office EFA. Discussing, Dr. Klaus und Sabine Berndsen, Dirk Fissmer (EFA)

MOVING TO NEW PREMISES



Coworking Space



Content Studio



Concept Studio



Creative Play Space: The human is only truly human where they play. (Friedrich Schiller)

Starting from September 2024, EFA, in partnership with RCE-Ruhr, will be relocating to the premises of Dr. Berndsen GmbH at Südring 17, 59423 Unna. Once recognition as an independent RCE by Tokyo is confirmed, the EFA RCE-Westfalen-Lippe will also establish its headquarters at the same address.

Furthermore, the new partner will support cause-related marketing initiatives and projects worldwide. For a more detailed explanation, please refer to page 6 of this brochure.

Nachhaltigkeit lernen



Ausgezeichnet als offizielle Maßnahme der Weltdekade Nationaler Aktionsplan



competence partner of

RCE~Ruhr

officially acknowledged as



ACKNOWLEDGED BY



leben.natur.vielfalt



die UN-Dekade

Minister für Bundes- und Europa-angelegenheiten sowie Internationales des Landes Nordrhein-Westfalen



PARTNER-LOGOS OF EFA



Ausgezeichnet als
offizielle Maßnahme
der Weltdekade
Nationaler Aktionsplan

competence partner of
RCE~Ruhr
officially acknowledged as



ACKNOWLEDGED BY



UNITED NATIONS
UNIVERSITY



zurbrüggen
www.zurbrueggen.de



In cooperation with
Zurbrüggen Wohn-Zentrum GmbH
Hans-Böckler-Straße 4
Unna · Delmenhorst · Bielefeld · Oelde · Herne
Registered office: 59423 Unna

CONTACT

Dirk Fißmer
www.fissmer-tadschikistan.de
efa.info@gmx.de · Tel.: 01577 3317350

DONATION ACCOUNT

Sparkasse Bergkamen-Bönen

Bildung und Entwicklung e.V.
IBAN: DE98 4105 1845 0017 0425 65
SWIFT-BIC: WELADED1BGK

Donation receipts are available. Donations are tax deductible. For donations of €30 and above, you will receive a confirmation of the donation if you provide your address.



Fotos at home and abroad: Dirk Fißmer
Layout: wolf.daniela@zurbrueggen.de